

Weekly Newsletter

THE KENT COMPANIES

Making your life



October 31, 2024

Period 11, Week 4

Tom Thumb/ HR News



page 2-3

WesTex News



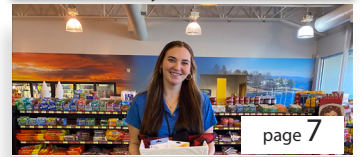
page 4

Kent Kwik News



page 6

Bountyland News

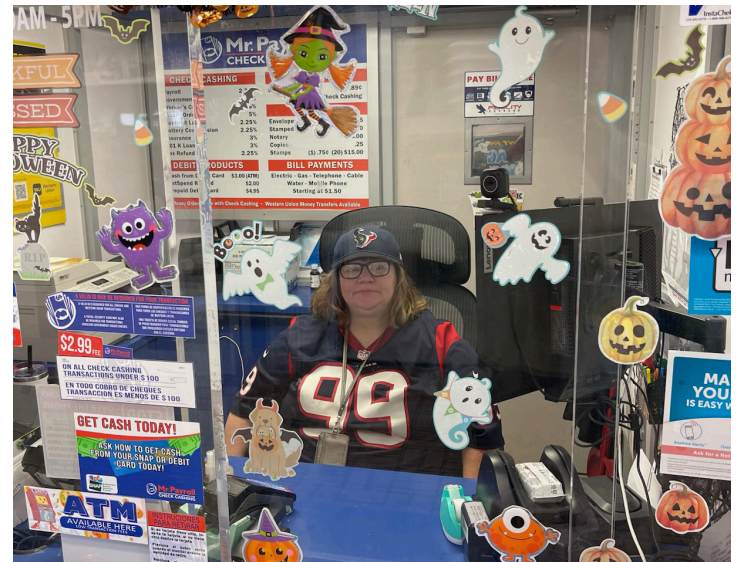


page 7

MR. PAYROLL NEWS



Happy Halloween!! Mr. Payroll is all dressed up for Halloween! If you get a chance, stop by for a treat and tell them BOO! we have Ms. Lisa from 2316 as Winifred Sanderson. BE careful, she might put a spell on you!! We also have Rosa G, at 2302, she might put you in cuffs just like Ms. Amy, the manager of the C store!! Ms. Rosa H from 2319 is a witch!! EEE she might make you a mean witches brew! And Ms. Vikki from 2202 is the GHOST with the MOST, BEETLEJUICE!! Don't say it 3 times she will get ya! And Last but not least, Ms. Rachel from 2215 is the biggest Texans fan! Y'All come out to see us!



TOM THUMB NEWS



The Tom Thumb Team at 963 and Subway 9953 are looking frightfully good this Halloween.



The Team at 952 is also having a great time dressing up!

956 Store Manager, Jason, dressed up for Fantasy Festival in Key West this past weekend and stopped in for a photo shoot with his TMs.



Julia, 953 SM, celebrated her 25th birthday. Happy Birthday, Julia!



Carina, 950 SM, loading up the roller grill before a busy lunch!



Gerald Wheelus, Director of Organizational Development, at 955 visiting with FC, Everton, and SM Anthony. He was also a favorite with Subway Guests and TMs.

HR NEWS

OPEN ENROLLMENT IS HERE!

Empower Your Future: Choose the Benefits You Deserve!

2025 benefits open enrollment is open November 1-30, 2024



Corporate Medical Insurance

The Kent Companies offers three medical options through Cigna. All three options are PPO plans and offer in-network and out-of-network benefits. The Kent Companies pays up to 88% of the monthly premium total for Team Members base plan.

(Cigna is offered to managers, Field Coaches and Corporate Office.)



Non-Corporate Medical Insurance

Paid 100% by the company for Team Members and Assistant Managers. In network preventative and wellness health care services are covered 100% and not subject to deductible or copay. Plan includes group accident and hospital coverage, paid by the company. Option to add spouse and dependents.



Dental Insurance

MetLife dental insurance covers preventative care, including cleanings, x-rays, space maintainers, etc., 100%.



Vision Insurance

Vision service plan (VSP) offers complete, high quality vision care. The plan offers benefits for eye exams, frames, eyeglasses, and contact lenses. In addition, Team Members may receive discounts for Lasik surgery and additional frames and lenses.



Life Insurance

The Kent Companies pays 100% for \$50,000 Accidental death and dismemberment (AD&D) insurance for all Team Members (corporate and non-corporate.) Team Members have the option to add additional insurance for themselves, spouse or children.



Accident Enhancement

After an accident, you may have expenses you've never thought about. Accident insurance can help with hospitalization, emergency room, urgent care, prescriptions, diagnostic testing, hospitalization, burns and dislocations.



Hospital Enhancement

Hospital insurance with Sun Life can help cover hospital admission, hospital confinement, and intensive care.



Critical Illness with Cancer

The cancer insurance benefit will help cover some of the out-of-pocket expenses such as: transportation to a medical facility, specialized treatment costs, and living expenses like rent/bills.



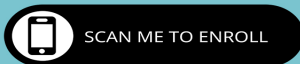
Short Term Disability

Sun Life short term disability plan can help protect your income by offering disability benefits to make ends meet when you are out of work.



401(k)

Team Members who have been with the company for at least one year continuously are eligible to enroll in the John Hancock 401(k) plan. The Kent Companies matches dollar for dollar up to 4% of annual salary. Team Members are 100% vested on day one. (Eligible Team Members will receive a separate email with enrollment instructions)



Start Enrolling Tomorrow, November 1st:

SCAN HERE to make your benefit elections or at:

<http://boss.employeenavigator.com>

- Click. Register as a New User (link can be found toward the bottom of the page)
- Create Your Account using the name and information your pay stub Company Identifier: KentCo

WESTEX NEWS



WesTex Urgent Care joined the Midland Fire Department in hosting a free 'Trunk or Treat' event on Saturday, Oct. 26, at the Central Fire Station. Thank you, Chantay, Clinical Manager (9107), and Kristi, Revenue Cycle Specialist, for volunteering your time and your smiles!!



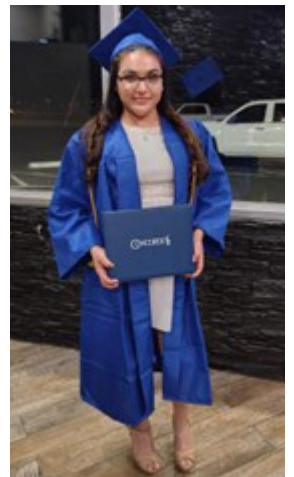
Spotlighting Lea Rodriguez, WestTex Urgent Care Director of First Impressions



Lea graduated from John F Kennedy High School in Denver, Colorado. She then attended Concorde Career College in their Dental Assistant Program in Aurora, Colorado.

Before joining WestTex Urgent Care in July, as a "Director of First Impression", Lea worked as a Dental Assistant, a Debt Collector, and a Pharmacy Technician in Colorado. Lea now shares her welcoming smile at the Briarwood location (9105) in Midland.

Lea and her fiancé have a 7-month-old Pitbull puppy named Kato. Lea enjoys trying new cooking recipes, exercising, drawing, playing with her puppy, reading, traveling, attending church and self-improvement.



REVIEWS OF THE WEEK! WESTEX 9105

"I went in first thing in the morning, minutes before they opened, and from the minute I walked in, to the time I walked out, the staff was so very kind. I got seen quickly, the NA(Naki, I'm so sorry, I can't remember her full name) she was the sweetest young lady. The NP who came in to tell me the results of xrays, she was so kind hearted. I have never been to this clinic, but this is now my new go to! Thank yall all for your kind service!"

"Great visit on a Sunday morning. Doc was very personable. Asking a lot of questions to figure out my issue. Same Doc I saw in January for shingles and the meds she gave me stopped shingles from spreading immediately."

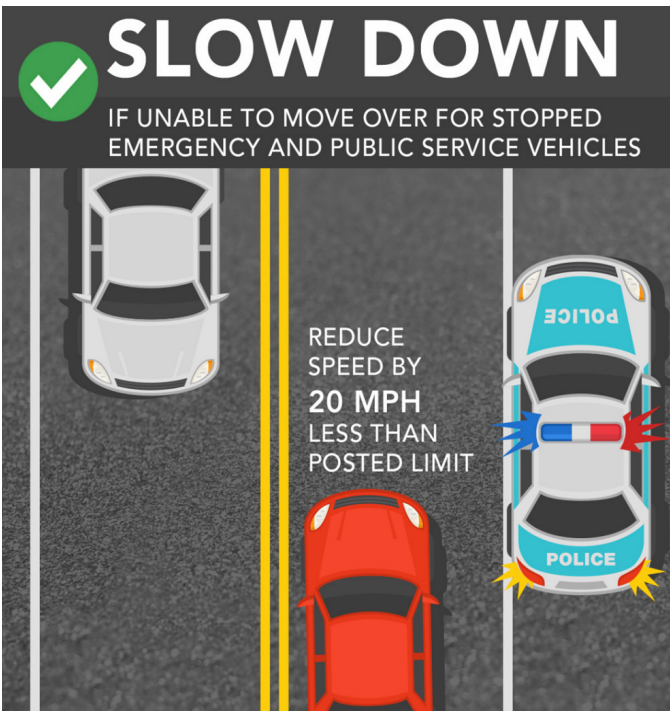


SAFETY NEWS

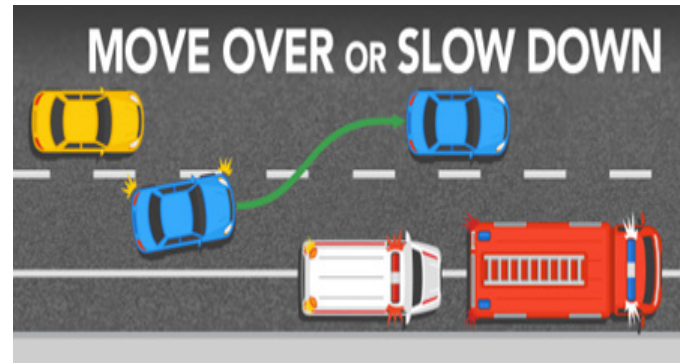
Keeping Safety in Sight

Nothing is too Small!

Safety Definition: to ensure safe and healthful working conditions for workers by setting and enforcing standards by providing training, outreach, education, and assistance.



Most state's Move Over or Slow Down law requires drivers to **move over**—putting a lane between them and roadside workers—**or reduce their speed to 20 mph** below the posted speed limit when passing law enforcement, tow trucks, utility vehicles, emergency responders and TxDOT vehicles stopped with activated overhead lights on the side of the road.



FOOD SERVICE NEWS



Kevin, Baskin 1491, cooling off after the Marine Corps Marathon in Washington D.C. First marathon time 4:47:38.



Mariah, Rustic 440, celebrating her 18th birthday with us today. Happy birthday, Mariah!



Gabe, Rustic 440, is also celebrating a birthday. Happy birthday, Gabe!

KENT KWIK NEWS



Rachel getting food for Captain Jack Sparrow



Carly wore the wrong outfit to work. Lol



Manager Cathy as Scooby-Doo. She was making her some Scooby-Doo snack.



I thought I had to call pest control. Christina as a roach.



Lakeychtia's Baby shower



Crystal (6903) and Gina (903). 2 birthday girls



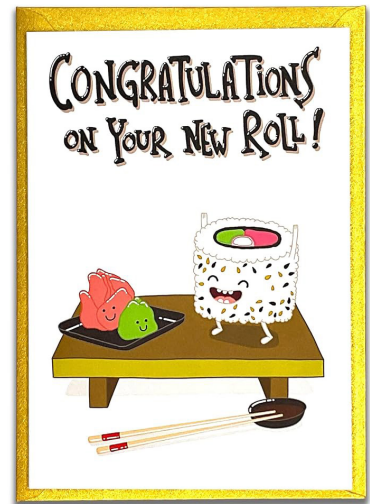
Rosemary, at store 411, dressed for the Halloween occasion!



Store 412's Anjelah and Tiffany getting into the Halloween spirit!



Whitney and Elizabeth ready for Trick or Treaters at store 402.



Felix at 412 working truck and celebrating his recent graduation from MIT to official Store Manager! Thank you for all of your hard work!

BOUNTYLAND NEWS



Happy one year to Jenna at 701! We appreciate you!



Happy one year to Gracie at 706. Thank you for all you do!