

Weekly Newsletter

THE KENT COMPANIES

Making your life
easy

Period 13, Week 4

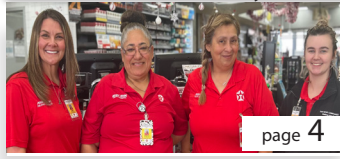
December 26, 2024

Office



page 2-3

Kent Kwik/Mr. Payroll



page 4

Bountyland/WesTex



page 5-6

Food Service/Safety



page 7

TOM THUMB NEWS



Merry Christmas from Team 951!



Merry Christmas from Team 952!



Merry Christmas from Team 963!



(Pictured Everton Dennis, Rick Klyczek and Sylvina Ellis)
We celebrated Team Member Sylvina Ellis from 956 who is retiring after 12 years with Tom Thumb and Kent. She is looking forward to visiting her daughter and spending more time with her family.

Rick Klyczek and Daisy Perez from 958, Daisy is celebrating her 20 year anniversary with Tom Thumb And Kent.

We wouldn't be where we are today without great people like Daisy on the team.



OFFICE NEWS

We had a great time at the office on Christmas Eve! Multiple departments participated in a Holiday Scavenger Hunt! Take a look at the fun we had!



Plus, Amy Morris has been spreading Christmas Spirit with her awesome decor!

Take a look at this photo of her office!



MORE THAN JUST WORK SHOES

CORPORATE SHOE PROGRAM



30% OFF

**YEAR-ROUND ON SKECHERS
SLIP-RESISTANT WORK
STYLES**

THE PERKS OF THE SKECHERS CORPORATE SHOE PROGRAM



**30% OFF
SKECHERS SHOES**

Savings year-round on select SKECHERS styles for your company's footwear needs.



**FREE SHIPPING
AND RETURNS**

Not the right fit? Simply send it back to us for a quick return at no cost. No restocking fees.



**500+ SKECHERS
RETAIL STORES**

Shop Skechers footwear at any of our 500+ stores across the United States and Canada.



**QUARTERLY FRIENDS
AND FAMILY DAYS**

As part of our Skechers family, get exclusive savings on 3,000+ styles for men, women, and kids.

SHOP ONLINE:

First-time users: Register at the link below using your Company Access Code.

www.skechersdirect.com/register

Company Access Code: **A5KDZHQZ**

(Company Access Code is case-sensitive.)

If you are already registered, log in at www.skechersdirect.com/login

SHOP RETAIL:

Show this flyer when shopping at our SKECHERS retail stores nationwide or mention **RETAIL CODE: K2Q**

THE KENT COMPANIES

Making your life



If you have any questions regarding this program, please contact SKECHERS Direct Customer Service at (855) 759-7463 or email us at info@skechersdirect.com. Valid at SKECHERS Retail stores and SKECHERS online only. Offer is valid for employees of this company only. Posting the exclusive discount codes or URL online is not permitted. Not valid on sale or test styles and cannot be used in conjunction with any other offers or promotions.

**SCAN THIS QR CODE
TO RECEIVE THIS OFFER
ON YOUR SMARTPHONE**



Team Members are now able to get a 30% discount on non-slip closed toe shoes at Skechers across the USA!!

To be able to use this perk, please show them the flyer above. Flyer can be shown on phone or paper.

Please reach out to benefits@kentoil.com for any questions.

KENT KWIK NEWS



315 was all decorated for Christmas!

These Team Members were greeting Guests with a smile on Christmas Eve!



Last week we posted 5 days of Christmas giveaways on our social media pages. Here is one of the winners picking up her goodie basket from 433.

MR. PAYROLL NEWS



We would like to Say WELCOME to our new Team Members. Ms. Aquanetta (left) and Ms. Minerva (right).



Ms. Vikki and Ms. Aquanetta showing their Christmas spirit!

Welcome to the Team! Our company is growing and changing every day and we're thrilled to have you along for the ride!!

BOUNTYLAND NEWS



Shilish at 706 is one of our favorite Guests to see each day! The Team at 706 bought him a Christmas present and he was over the moon opening it.



The Team at 706 having a Christmas Dinner.

We hope you all had a Merry Christmas!



Welcome to the Team Heather at 716 (right) and Angie at 706(left).



Jessie at 706 celebrated her one-year anniversary with us last week. Thank you, Jessie, for always going above and beyond we look forward to many more years with you on our Team!

WESTEX NEWS



Wishing everyone a Merry Christmas from Westex Andrews 9108. May your Christmas be filled with joy and laughter.

Left to right: Monica, Lisa, Samantha, Aileen, Andrea and Abigail.



Zakymbria joined Westex Urgent Care as a Medical Assistant (MA) in October and she helps our clients at the Midland/Avalon (9107) clinic. She graduated from Midland High School and has worked as an MA in both General Surgery and Pain Management.

Zakymbria has a 4-year-old daughter, Evverleigh. She enjoys reading, shopping, baking and traveling!



Ariana joined Westex Urgent Care as a Medical Assistant in October and is most frequently at our Midland/Avalon (9107) clinic. Previously, she earned her phlebotomist certification and worked at Odessa Regional Medical Center and Medical Center Hospital.

She has two pets, a dog and a cat, and she enjoys painting, reading and photography.



REVIEWS OF THE WEEK! WESTEX 9109

“Went in and they took very good care of me. They were very kind and polite and I would come back to y’all anytime.”

“Scheduled at 9 p.m. last night for 7:30 this morning. Got right in and got fixed up. Was out by 7:50. Nice, clean facility. The receptionist was nice and Dr Teresa was great.”



FOOD SERVICE NEWS



Rustic 440 having a Christmas Dinner!

Plus, Team Members from Kent Kwik joined in on the fun!



Baskin Robbins is still cranking out some adorable cakes!

Look at this amazing reindeer made for Christmas!



Rustic 440 just got all new floors!

Thank you to the remodeling Team who made this look amazing!



SAFETY NEWS

Keeping Safety in Sight

Nothing is too Small!

Safety Definition: to ensure safe and healthful working conditions for TEAM MEMBERS by setting and enforcing standards by providing training, outreach, education, and assistance.

DRINKING & DRIVING

FATAL ACCIDENTS INVOLVING ALCOHOL INCREASE 129% ON NEW YEARS DAY

DECEMBER AUTO FATALITIES
28% ALCOHOL RELATED

DRUNK DRIVING ANNUAL COSTS ARE MORE THAN \$130 BILLION

WHAT'S YOUR BLOOD ALCOHOL LEVEL?
ONE DRINK = 12 OZ BEER, 5 OZ WINE OR 1.5 OZ LIQUOR

| DRINKS | BODY WEIGHT IN POUNDS | | | | INFLUENCED |
|--------|-----------------------|------|------|------|-------------|
| | 100 | 140 | 180 | 220 | |
| 1 | 0.04 | 0.03 | 0.02 | 0.02 | POSSIBLY |
| 2 | 0.08 | 0.05 | 0.04 | 0.03 | |
| 3 | 0.11 | 0.08 | 0.06 | 0.05 | IMPAIRED |
| 4 | 0.15 | 0.11 | 0.08 | 0.07 | |
| 5 | 0.19 | 0.13 | 0.11 | 0.09 | INTOXICATED |

I'M FINE JUST FINE
DWI FIRST OFFENSE
UP TO \$2K FINE
\$3K STATE FINE
LOSS OF LICENSE
UP TO 6 MONTHS IN JAIL

WWW.GCOEM.ORG

ARRIVE ALIVE

PLAN AHEAD
DESIGNATE A DRIVER
PHONE A FRIEND
CALL A RIDESHARE
ASK BARTENDER FOR HELP

This graphic highlights the severe dangers and costs of drinking and driving, emphasizing that December often brings a rise in alcohol-related fatalities.

It outlines the impact of alcohol on blood alcohol content (BAC) levels, legal consequences such as fines and license suspension for DWI offenses, and stresses the importance of planning ahead by designating a driver or using alternative transportation to ensure safety and "Arrive Alive."